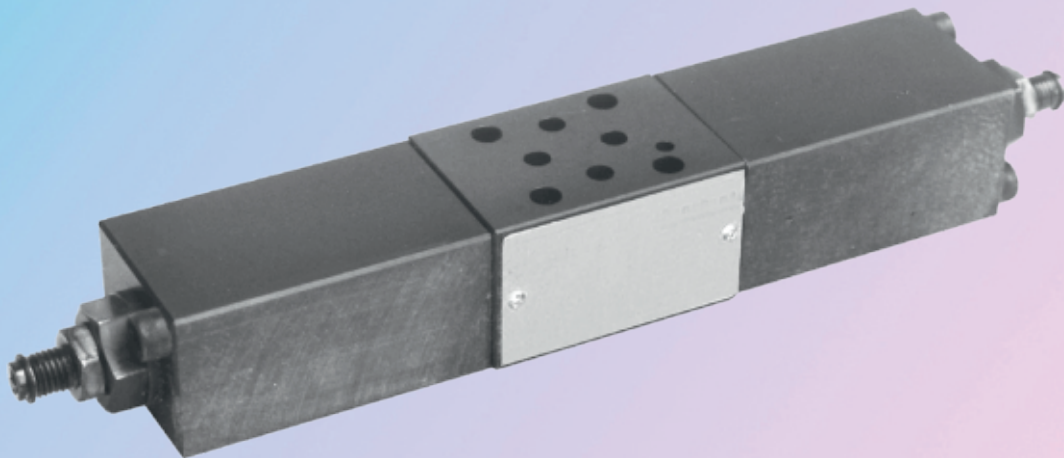


Anti-Shock Valve for Bent Axis Motors

Anti-Shock Valve for Hydraulic Bent Axis Piston Motors

Designation;
Anti-Shock



Hidrapac **Store**
www.HIDRAPAC.com.tr

Anti-Shock Valve for Bent Axis Motors

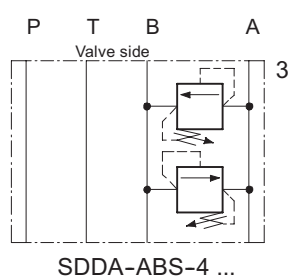
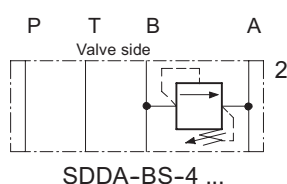
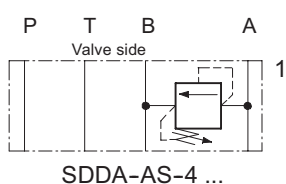
1. Description

Series SDDA ... S-4 units are stack mounting anti-shock cross-line relief valves which relieve A to B and/or B to A. They have fast response times, seat valves with near zero-leakage, and

they have the full flow rating of the size 2 range. The 3 mm location pin on the actuator face of the valve prevents incorrect mounting. Valves are shipped

as standard with screw adjustment. Alternatively, they can be supplied with adjustment by hand knob, or lockable hand knob.

2. Symbols



3. Main characteristics

Designation		pressure relief slice valve
Design		direct acting seat valve
Mounting method		stack mounting
Size		ISO 4401-02-01 interface
Weight	kg	Model ...AS.../ ...BS...: 0,77/ Model ...ABS...:1,15
Mounting attitude		unrestricted
Flow direction		see symbols
Operating pressure range	bar	... 250 in P, A and B; ... 160 in T
Adjustment ranges	bar	code 25 = ... 250 code 16 = ... 160 code 10 = ... 100 code 04 = ... 040 code 02 = ... 020
Flow rate, Q max.	l/min	25
Fluids		HL and HLP hydraulic oils to DIN 51 524; for other fluids, please consult BUCHER
Fluid temperature range	_C	-25 ... +80
Ambient temperature	_C	-25 ... +80

Replaces: D-6.60

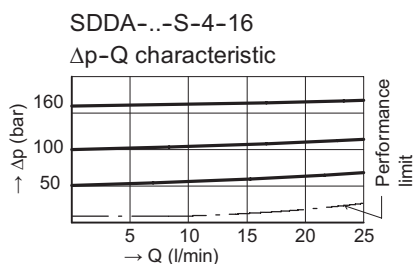
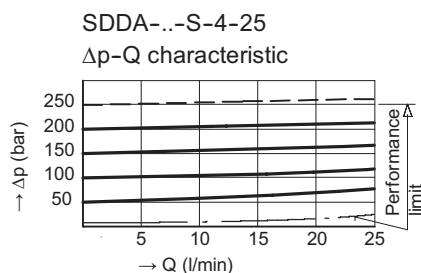
1/4

Classification: 430.10.62.10
Reference: 400-P-300101-EN-/09.2015

Anti-Shock Valve for Bent Axis Motors

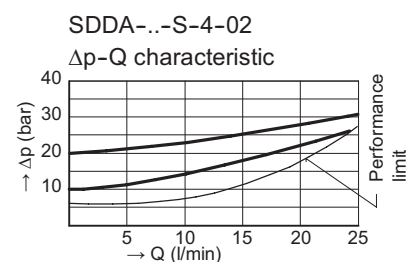
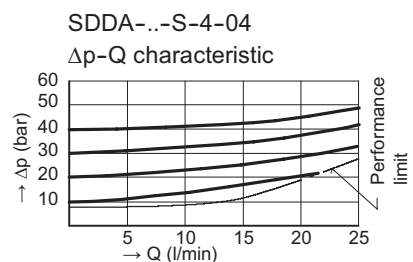
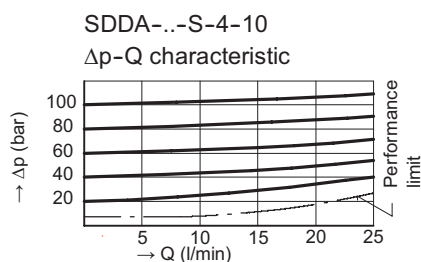
4. Performance graphs

Measured with oil viscosity 33 mm²/s (cSt)



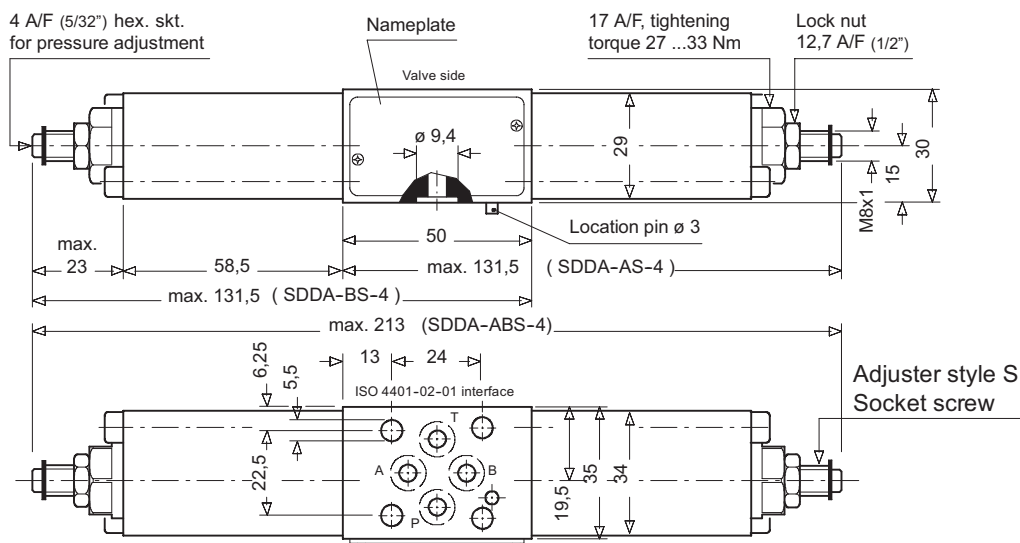
Rate of pressure change when turning the adjusting screw:

SDDA-...S-4-25: 1 turn	≅ app. 45 bar
SDDA-...S-4-16: 1 turn	≅ app. 30 bar
SDDA-...S-4-10: 1 turn	≅ app. 18 bar
SDDA-...S-4-04: 1 turn	≅ app. 6 bar
SDDA-...S-4-02: 1 turn	≅ app. 2,5 bar



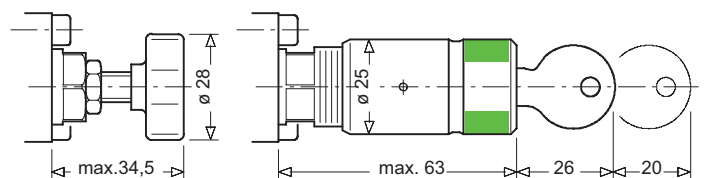
5. Dimensions

4 A/F (5/32") hex. skt.
for pressure adjustment



Adjuster styles / OPTIONAL

Conversion kit for styles S, H and Z5 - see related data sheets



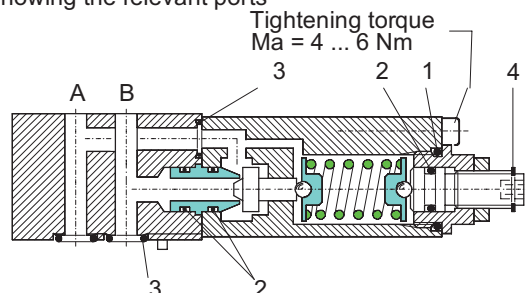
Adjuster style H
Hand knob

Adjuster style Z5, lockable hand type 2H.

Anti-Shock Valve for Bent Axis Motors

6. Schematic section

showing the relevant ports



Seal kit no. DS-212, comprising *):

Itm.	Qty.	Qty.	Description	Size
1	2*)	1	O-ring no. 016	● 15,60 X 1,78 N90
2	6*)	3	O-ring no. 009	● 5,28 x 1,78 N90
3	6*)	5	O-ring no. 010	● 6,07 x 1,78 N90
4	2*)	1	Snap ring	Type SS ●7

SDDA-AS/BS-4
SDDA-ABS-4

7. Installation and servicing

All installation and servicing must be carried out with care, and by qualified personnel only. At installation, be sure to mount the valve the correct way up.

Do not confuse the flat surface (directional valve side) and the surface with O-ring counterbores (actuator side). When changing seals, the new seals

should be thoroughly oiled or greased before fitting them to the valve. Use the correct tightening torques when fitting the threaded housing and cap screws.

8. Ordering code

Ex.

S	D	D	A	-	AB	S	-	4	-	25	-	S	-	-	-	1
---	---	---	---	---	----	---	---	---	---	----	---	---	---	---	---	---

- S = stacking valve
- D = pressure relief function
- D = direct acting
- A ... Q = standard model per current data sheet
- Z ... R = special features by arrangement
- A = relief function A to B
- B = relief function B to A
- AB = relief function A to B and B to A
- S = anti-shock, cross-line function
- 4 = ISO 4401-02-02 interface
- 25 = pressure range ... 250 bar
- 16 = pressure range ... 160 bar
- 10 = pressure range ... 100 bar
- 04 = pressure range ... 40 bar
- 02 = pressure range ... 20 bar
- S = with hex. skt. screw adjuster (standard)
- H = with hand knob adjuster type H
- Z = with lockable hand knob adjuster type Z5
- (Blank) = Nitrile seals (standard)
- Z = Viton seals
- For special seals, please consult BUCHER
- 1 ... 9 = design number (omit when ordering)

9. Related data sheets

Old no.	New no.	
i - 17.00	400-P-015101-E	Procedure for changing the Adjuster Style
i - 30	400-P-030101-E	ISO 4401-02-01 interface

Complete Product Range

Bent Axis Piston Motors

K2FM (DIN) Bent Axis Motor
K3FH (HYBRID) Bent Axis Motor
A2MS (SAE) Bent Axis Motor
A3MS (SAE2) Bent Axis Motor
A2FM (ISO) Bent Axis Motor
A2FE (Fixed Plugin) Bent Axis Motor
A2FE (Two Speed) Bent Axis Motor
A2FT 45 (Inline) Bent Axis Motor

Bent Axis Piston Pumps

K2FA (DIN) Bent Axis Pump
K2FH (HYBRID) Bent Axis Pump
K2FL (Aluminum) Bent Axis Pump
A2FS (SAE) Bent Axis Pump
A3FS (SAE2) Bent Axis Pump
A2FO (ISO) Bent Axis Pump
A3FO (ISO2) Bent Axis Pump
A2FP (Fixed Plugin) Bent Axis Pump

Variable Displacement Motors

AXMV Variable Piston Motor
AXMA Variable Piston Motor
AXMI Variable Piston Motor

Variable Displacement Pumps

AXVP Variable Piston Motor
AXVA Variable Piston Motor
AXVI Variable Piston Motor

Dual Flow Piston Pumps

A2FD (DIN) Dual Flow Pumps
A2FD (SAE) Dual Flow Pumps
A2PD Axial Dual Output Pumps

Axial Piston & Gear Pumps

A3PP Axial Piston Pumps
A3PH High Pressure Pumps
A2GP Gear Pumps
A2GPT Tandem Gear Pumps
A2GM Gear Motors
A2GMT Tandem Gear Motors

Valve (ByPass) (Flushing) (Cavitation)

Circulation Valve
ByPass Valve
Anti-Cavitation Valve
Flushing Valve
LS Valve
AntiShock Valve
Speed Sensor

Hydraulic Spare Parts

Suction Fittings
Couplars
Adapters
Flanges
Power Take Off
Monoblock Valve
Section Valve

Hydraulic Pumps, Pumps

Bent Axis Hydraulic Piston Pumps, Bent Axis Hydraulic Piston Pumps, Bent Axis Pumps, Variable Displacement Piston Pumps, Variable Displacement Piston Pumps, Axial Piston Pumps, High Pressure Piston Pumps, Gear Pumps, Gear Pumps, Hydraulic Valve.

www.HIDRAPAC.com

Address;

HIDRAPAC HİDROLİK İÇ VE DIŞ TİC LTD ŞTİ

Address; Fevzicakmak Mah. Sıla Cad. Kobisan 3 San. Sit.
No:73 / C Karatay – Konya, PO Code; 42050, Türkiye

Phone; +90 551 111 77 44

VAT Number; 462 077 9143

www.HIDRAPAC.com

MAIL@HIDRAPAC.com

INFO@HIDRAPAC.com

Hidrapac **Store**

www.HIDRAPAC.com.tr

Hidrapac **Premium**

www.HIDRAPACHYDRAULIC.com